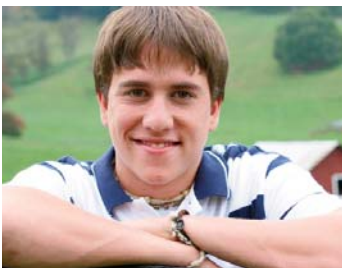


# Western Area

## FAMILY SERVICES

**B**aptist Children's Homes (BCH) provides residential services for children in western North Carolina through various convenient locations.



**Residential Services:** Broyhill Home in Clyde is a residential facility for school-age children. Family system and group interventions are used. Appropriate referrals are for children who can attend public school and have the ability to benefit from group living and the group process. To access services, contact the Intake Case Manager at 828-627-9254 or 828-252-4652.

Drake Cottage in Franklin is a group home providing individual and family clarification for boys 11 years and older. The facility serves nine youth who are able to attend public school, have the potential to control impulsive behaviors, and who can benefit from and contribute to an intensive group process. To access services, contact the Social Worker at 828-349-1640.

Moody Home in Franklin is a transitional program to help boys ages 16-21 become prepared for independence. The transitional living program is designed to assist youth as they transition from dependent, out-of-home care to self-sufficient independence. Strategies to accomplish these goals will be clear and measurable. The length of placement is determined by the time it takes the young person

to accomplish his/her goals. To access these services, contact 828-369-9785.

Truett Baptist Association Children's Home is located in Clay County near Hayesville and serves children in the custody of the Department of Social Services from Clay, Graham, and Cherokee Counties. It is licensed for six boys and girls ages six and older who are able to attend public school and would benefit from individual and family clarification. To access services, contact the supervisor/case manager at 828-389-1100.

We are licensed to open foster homes for level one children in the Western Area as another avenue of assisting the needs of the children within their own community.

**Emergency Care:** The Emergency Care facilities provide temporary (maximum 60 days) residential care for families and legal custodians experiencing an immediate crisis which results in the child having no safe or appropriate place to reside. Assessments are provided to enhance further planning.

Carolina Cottage is located at Broyhill Home in Clyde. It is designated to provide emergency care to females, ages 3-18. To access services, contact the Emergency Care Case Manager at 828-627-9254 or 828-252-4652.





**Referrals:** Referrals to Baptist Children's Homes are accepted from anyone and can be as simple as an email or a phone call from the individual, departments of social services, pastors, educators, juvenile services, or other family members. However, the legal custodian must be a part of the process and must reside in North Carolina.

To correspond, mail to:  
Western Area Family Services  
111 Sneed Drive  
Clyde, NC 28721  
*Linda Morgan*  
*Regional Director*  
*Western Area Family Services*

To inquire about Western Area services or to make a referral, contact:  
Phone: 828-627-9254  
Fax: 828-627-8811

To learn more, see more photos and read Western Area's online journal, go to: [www.bchfamily.org/westernarea](http://www.bchfamily.org/westernarea)

**Service Area:** Western Area Family Services provides services for the following North Carolina counties: Avery, Buncombe, Cherokee, Clay, Graham, Haywood, Henderson, Jackson, Macon, Madison, McDowell, Mitchell, Polk, Rutherford, Swain, Transylvania, Yancey.



**Cost:** Cost of service is based on a sliding fee scale for parent or relative custodians. DSS and other social service custodians will pay based on a pre-established purchase of service charge.

